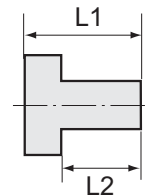


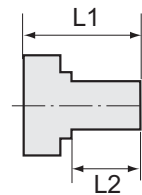
Arbeitsdruck max. 25 bar  
 Betriebstemperatur max. 90 °C  
 Material Messing CW614N (CuZn39Pb3)

Maßangaben der Standardverschraubungen können sich durch Optimierungsprozesse während der Kataloglaufzeit geringfügig ändern. Aktuelle Werte finden Sie im Online-Shop.



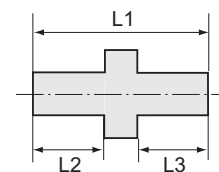
**Reduziernippel, kurze Ausführung, zylindrisch**

| Artikel Nr. | Außen-<br>gewinde | Innen-<br>gewinde | L1<br>mm | L2<br>mm | SW<br>mm |
|-------------|-------------------|-------------------|----------|----------|----------|
| 4000351958  | G 1/4             | G 1/8             | 14,0     | 9,0      | 17       |
| 4000351959  | G 3/8             | G 1/4             | 14,0     | 9,0      | 19       |
| 4000351960  | G 1/2             | G 1/4             | 17,0     | 11,0     | 24       |
| 4000351955  | G 1/2             | G 3/8             | 17,0     | 11,0     | 24       |
| 4000351956  | G 3/4             | G 1/2             | 18,0     | 12,0     | 32       |
| 4000351957  | G 1               | G 3/4             | 19,0     | 13,0     | 38       |



**Reduziernippel, lange Ausführung, zylindrisch**

| Artikel Nr. | Außen-<br>gewinde | Innen-<br>gewinde | L1<br>mm | L2<br>mm | SW<br>mm |
|-------------|-------------------|-------------------|----------|----------|----------|
| 4000351901  | G 1/8             | G 1/4             | 23,0     | 7,0      | 17       |
| 4000351900  | G 1/4             | G 1/8             | 22,0     | 9,0      | 17       |
| 4000351902  | G 1/4             | G 3/8             | 27,0     | 9,0      | 19       |
| 4000351904  | G 3/8             | G 1/2             | 29,0     | 11,0     | 24       |
| 4000351903  | G 1/2             | G 3/8             | 26,0     | 11,0     | 24       |



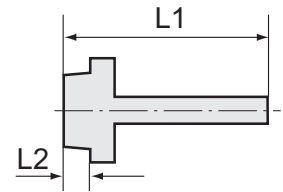
**Doppelgewindenippel, Außengewinde zylindrisch**

| Artikel Nr. | Gewinde 1 | Gewinde 2 | L1<br>mm | L2<br>mm | L3<br>mm | SW<br>mm |
|-------------|-----------|-----------|----------|----------|----------|----------|
| 4000351950  | G 1/4     | G 1/4     | 23,0     | 9,0      | 9,0      | 17       |
| 4000351951  | G 1/4     | G 3/8     | 23,0     | 9,0      | 9,0      | 19       |
| 4000351952  | G 3/8     | G 3/8     | 23,0     | 9,0      | 9,0      | 19       |
| 4000351953  | G 3/8     | G 1/2     | 26,0     | 9,0      | 11,0     | 24       |
| 4000351954  | G 1/2     | G 1/2     | 28,0     | 11,0     | 11,0     | 24       |



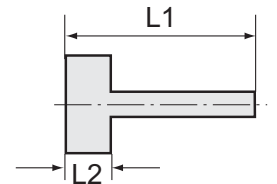
**Einschraubschlauchtülle mit Außengewinde zylindrisch**

| Artikel Nr. | Gewinde | für<br>Schlauch<br>mm | L1<br>mm | L2<br>mm | SW<br>mm |
|-------------|---------|-----------------------|----------|----------|----------|
| 4000351927  | G 1/4   | LW 6                  | 39,0     | 9,0      | 17       |
| 4000351928  | G 1/4   | LW 9                  | 39,0     | 9,0      | 17       |
| 4000351929  | G 1/4   | LW 13                 | 39,0     | 9,0      | 17       |
| 4000351930  | G 3/8   | LW 6                  | 39,0     | 9,0      | 19       |
| 4000351931  | G 3/8   | LW 9                  | 39,0     | 9,0      | 19       |
| 4000351932  | G 3/8   | LW 13                 | 42,0     | 9,0      | 19       |
| 4000351933  | G 1/2   | LW 9                  | 42,0     | 11,0     | 24       |
| 4000351934  | G 1/2   | LW 13                 | 45,0     | 11,0     | 24       |



**Aufschraubschlauchtülle mit Innengewinde zylindrisch**

| Artikel Nr. | Gewinde | für<br>Schlauch<br>mm | L1<br>mm | L2<br>mm | SW<br>mm |
|-------------|---------|-----------------------|----------|----------|----------|
| 4000351935  | G 1/4   | LW 6                  | 36,0     | 11,0     | 17       |
| 4000351936  | G 1/4   | LW 9                  | 36,0     | 11,0     | 17       |
| 4000351937  | G 1/4   | LW 13                 | 36,0     | 11,0     | 17       |
| 4000351938  | G 3/8   | LW 6                  | 36,0     | 11,0     | 19       |
| 4000351939  | G 3/8   | LW 9                  | 36,0     | 11,0     | 19       |
| 4000351940  | G 3/8   | LW 13                 | 36,0     | 11,0     | 19       |
| 4000351941  | G 1/2   | LW 9                  | 39,5     | 14,5     | 24       |
| 4000351942  | G 1/2   | LW 13                 | 39,5     | 14,5     | 24       |



**Schlauchtülle mit Kugelnippel und Sechskant-Überwurfmutter**

| Artikel Nr. | für<br>Schlauch<br>mm | für Überwurf-<br>mutter | L1<br>mm | L2<br>mm | SW<br>mm | L1<br>Überwurfmutter<br>mm |
|-------------|-----------------------|-------------------------|----------|----------|----------|----------------------------|
| 4000351905  | LW 6                  | G 1/4                   | 47,0     | 13,5     | 17       | 15,0                       |
| 4000351906  | LW 9                  | G 1/4                   | 47,0     | 13,5     | 17       | 15,0                       |
| 4000351907  | LW 6                  | G 3/8                   | 48,5     | 15,0     | 19       | 15,0                       |
| 4000351908  | LW 9                  | G 3/8                   | 48,5     | 15,0     | 19       | 15,0                       |

